



SNAPSHOT 2025



BikesfortheWorld.org
11720 PARKLAWN DR
ROCKVILLE MD 20852

703-740-7856
office@bikesfortheworld.org

Message from Taylor

Looking back at 2025 it is honestly shocking to see how big of a year we had! We didn't set out seeking to eclipse any records or top our 2024 accomplishments, only to build on the energy of our supporters and ensure that we could help fill the gaps our international partners faced due to substantial upheaval in the international development and aid sector. As December came to a close we had sent out a whopping 25 containers loaded with valuable bikes, spare parts, tools, sewing machines, and other implements of empowerment.

Our 2025 efforts represent nearly 13,000 bikes that will help people in largely low-income rural communities access employment, job training, education and healthcare. With the changing landscape of international aid, our partners' programs focused on empowering, educating and lifting up those who are most vulnerable are

more vital than ever. Thanks to revenue generated by bicycle repair and sales many partner programs were able to expand their local impact in 2025. These include expanded vocational training initiatives in Ghana, more funds for a health clinic expansion in Burkina Faso and a broader social safety net for at-risk women in Rwanda. Without your donated bikes these initiatives wouldn't be possible! This is why we continue to believe that a bike is more than just a bike—it is a powerful tool for individual and community empowerment and positive social change.

Locally we hit new milestones in terms of volunteers and school groups coming together to lay the groundwork for the transformative impact just one shipment of bikes can have. Over 2,000 individual volunteers contributed to our 2025 impact along with 45 school groups. As a small team these volunteers are the backbone of our ability to make the world a better place through the power of the bicycle. Knowing that the continual expansion of our local efforts has been key to sustained growth and impact, we expanded our staff in 2025, welcoming Simon into the Bikes for the World family. His nearly two decades of international development experience has strengthened our organization and provided a greater ability to take on new programs in our warehouse and workshop.

Thanks to our phenomenal community of like-minded changemakers, I am confident that we will find new ways to surprise ourselves in 2026 as well!



A handwritten signature in black ink, appearing to read 'Taylor Jones', is positioned above the name and title.

Taylor Jones
Executive Director

14,095 Bikes Rescued in 2025

One of the key components that has made our program sustainable and impactful over the years is diversity. How and where we collect our bikes has shifted over the years to be fairly equal among our three main bike sources. These include the community led collection points that BfW was built on, drop off and abandoned bike sources such as bike shops, police departments, and condo buildings, and our most recent addition that continues to grow annually, waste transfer stations.

Waste Transfer

We now collect bikes regularly from waste transfer stations in six different DC-area counties. In 2025 we collected over a third of our bikes at transfer stations. These bikes have made it possible to maintain consistent shipments throughout the year, delivering bikes to our partner programs when they need them most, not just during our peak Spring season. They also provide a bulk of the work in the shop for our volunteer mechanics and to support the work we do with schools. Nearly all the parts we harvest, and use for repair and maintenance of donated bikes come from area transfer stations.

We have diverted over **20,000 bikes** from the waste stream at the two recycling facilities in Fairfax County, Virginia in the past 20 years.

Bike Shops

Of the “Other Partners” where we rescue bikes in bulk, bike shops provide the greatest number by far. In 2025 our shop partners diverted **3,355 bikes** into our program. Many shops also provide used parts, tools, wheels and tires to supplement our parts shipments. One of our biggest shop partners is Trek who we have worked with for over 20 years (as Race Pace and Spokes Etc.) **In 2025, Trek donated its 20,000th bike to our program.**

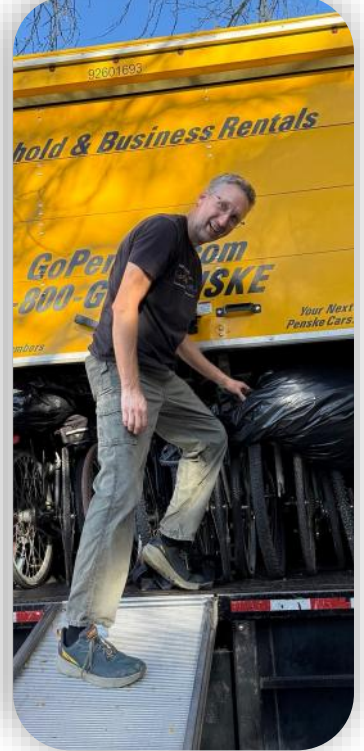
Collection Partners

Our collection partners remain our most valuable resource. The bikes collected at these events are typically better quality. Off-site collections allow us to work with more volunteers and provide the opportunity to interact with donors face-to-face. Two of our collection partners accept bikes year round, giving us the flexibility to best serve our partners and increase our warehouse space, by holding bikes

for us to pick up several times a year. In 2026 **the Rotary Club of Carroll Creek** (Frederick, MD) will surpass **8,000 bikes** donated to BfW. In 2025, **Otterbein United Methodist Church** in Hagerstown, MD hit **5,000 bikes** donated. They also remain our largest source of sewing machines. In 2025 we donated over **150 sewing machines**...the largest year ever!



Recycling Events Turn Big Numbers



Some collection events are actually hosted by recycling centers or local government agencies tasked with waste reduction and reuse. In 2025 our two largest one-time collection events were made possible through such initiatives.

The Arlington Environmental Collection and Recycling Event (E-CARE) is an environmentally friendly drop-off event at which residents can safely dispose of many hazardous and recyclable materials. In 2025, we supported two bike collections at E-CARE, both our biggest events since participating in this event. We collected **518 bikes** between the Spring and Fall events, enough to fill a shipping container! This was our 34th season collecting bikes at E-CARE bringing our total to **4,064 bikes** rescued.

Montgomery County Department of Transportation also has an annual drop off event which we have participated in over the years. In the last five years they have donated **1,500 bikes** to BfW and Rockville Bike Hub. This was another record year, the third in a row!. In 2025, MCDOT collected and donated **334 bikes**, half of those will be refurbished and donated locally.

Volunteers Turn Out In Record Numbers

2,090

Our volunteer team is largely made up of single-visit volunteers, but our team of regulars continues to grow. Whether they volunteer as part of a group, are students earning service-learning hours for school, or work in the shop week after week, we couldn't accomplish half of what we do without them. The BfW class of 2025 was a record **2,090** volunteers strong.

We hosted **107** groups this year including **56** that joined us in the warehouse. **45** different classes of students helped both in the warehouse and at off-site collections.

107



7,196

Our volunteers contributed **7,196** hours throughout 2025. Our busiest month was May with **408** volunteers working **1,252** hours across **30** groups!



Individual Effort, Collective Success



Coolidge High School

At **Coolidge High School**, students involved in Career and Technical Education now have the opportunity to work in a bicycle mechanic classroom through the **Project Bike Tech** initiative. Students in the program are learning to work with their hands in a structured environment. They foster teamwork and responsibility in an accessible workspace. By partnering with BfW, Coolidge brings that learning into our shop where students expand their skills while also gaining an understanding about the value of community service. This experience could translate into a career opportunity from classroom to real life.

Stone Ridge Social Action

This year marks our 14th **Stone Ridge** crew over our 15 year partnership (we only missed 2020-21). It started in 2011 with just two girls and this year we had a crew of 14 girls and three teachers. They continue to be a valuable asset in our program, helping us achieve more valuable shipments to improve the lives of thousands around the world. The **Social Action** program has sent **148 students** throughout our **15 year** partnership and together they have worked **8,230 hours** in our shop. The school has loaded **55 containers** at six different BfW locations. Their dedication is unmatched.



Bike-Minded Community

Group Strength. Greater Results

Over the course of the year, we saw time and again the value and power of showing up and standing in for change and humanity. As we saw larger programs shrink and funding withdrawn in 2025, our supported projects around the world became a lifeline to struggling communities battling health crises, climate change, and economic hardships. Our continued support of these small local organizations mobilized the response and kept critical services uninterrupted despite the uncertainty in international support.

Our commitment to our partner programs is made possible through our local partnerships with civic clubs, faith communities, schools, and hardworking individuals who transform empathy into action. Through the dedication and compassion of hard work and effort, individual volunteers combined forces to create a larger global ripple effect that changed lives and impacted communities. Together our action is universal and a powerful way to create lasting change in some of the most challenged regions of the world. As we continue to work together locally, we sustain programs around the world that enable rural communities to thrive.



Building Confidence



Amina didn't always believe cycling was for girls. That is before she joined the Bike for Future team. With each race Amina built confidence. She is now breaking barriers in a sport once considered "too difficult for girls." Her mother, who once worried that cycling would distract from school, now fully supports her dreams: "Cycling is not just a hobby for her. It is her passion and talent, and it could be her future career."

Amina's success goes far beyond competition, it is a powerful symbol of what girls can achieve when given equal opportunities, confidence, and skills. Through the Sport for Change approach, Bike for Future uses sports to challenge gender stereotypes, empower girls, and promote safe, inclusive spaces where young people, especially girls, can thrive.

Amina hopes her story will inspire more girls to take risks, break stereotypes and pursue what they love — no matter who tells them it's not for them.

"Girls need spaces to showcase their potential. Winning challenging cycling competitions has made me stronger, more hardworking and determined. I dream of representing my country in international competitions to inspire more girls to follow their dreams,"

— Amina. Bike For The Future Cycling Team

Building Trust



Baby Sloth Fine Coffee & Cacao

At the **FINCA Foundation**, our partner in Costa Rica, they seek opportunities to create a positive impact for communities with low economic growth, as was the case with cacao in the Northwest Region. With the aim of strengthening the national agricultural sector, FINCA offered access to microfinance, startup support, and skill-based education to work toward sustainable development.

Baby Sloth is a unique coffee company that was able to grow and expand into cacao production with the guidance and support of FINCA. The project started in 2020 and immediately felt the economic challenges in a changing world. They immediately shifted gears and improvised to expand their horizons and goals. They attracted more producers and built trust within this network of growers. This resulted in increased productivity and quality.

BfW has donated **50 containers** and **51,000 bikes** since 2005 in support of projects like this.



Building Futures



CHIP

Caribbean culture is rich with rhythms and dance. The **Cultural Heritage Identification and Preservation Project** brings together grassroots art forms and companies to share and retain cultural knowledge and assets.

PCW is committed to using theater, Afro-Caribbean folk dance and music to bring about community and individual change and development. They are continually nurturing talents in various art forms to meet national, regional, and international demands. *“Together we are preserving the past, empowering the present, and shaping the future of Caribbean culture.”*



MAID

Multi-Dimensional Approach to Inclusive Development is a free after school program for primary- and secondary-school students. These classes are designed to empower, educate and inspire early learners to foster consistent academic performance. By making education accessible, practical, and inclusive, PCW is unlocking the potential of young people, transforming education into a tool for economic growth, social equity, and long-term resilience. The bike project directly impacts this program through the sale of bikes and repair services which help fund these educational efforts.



FiND

Facilitating Inclusive Development in Communities is designed to empower young people and underserved individuals through accessible, skill-based education. The FiND program is aligned with local economic opportunities and provides mentorship and peer networks to help build confidence, guidance and long term motivation. PCW is a learning hub that fosters collaboration and leadership in space designed for innovation. Opportunities tap into the entertainment, service, and hospitality industries that thrive in the service industry-driven Barbados economy.



Building Opportunities



For communities and individuals in places rural and urban, our donated bikes, and the programs they support, are tools of empowerment and positive change. Through our partner program **Village Bicycle Project** in Ghana, revenue from bike repair and sales, alongside donated sewing machines, has allowed for a clothing design and apprenticeship program to spring up in Accra. Over ten young women are now able to learn a trade, using their own dedicated sewing machine, giving them more time and flexibility to expand their skills. One more way to provide a pathway to self-sufficiency and personal empowerment!



Agnes is one of several young women benefitting from the expanded vocational training possibilities we have established with Village Bicycle Project. Her success is just one example of how we transform a donated bike into an opportunity for advancement!

